

*Celebrating
the
History
of
A.M.P.*

2008 - PRESENT



LETTER FROM THE CHIEF EXECUTIVE OFFICER

Table of Contents

Letter from the President.....	1
History and Values	2
Milestones	4
A.M.P. Today: A Decade Later	6
Leadership	8
An Outstanding Medical Team.....	10
Innovation and Technology	14
Giving Back	18
Physicians and Locations	22

Associated Medical Professionals of New York, PLLC, was established in 2008 with the objective of providing integrated clinical services to patients with the highest level of quality care. I am extremely proud to have been involved in the formation and subsequent growth of our company. A.M.P. has become the largest independent urology/radiation oncology group practice in Central New York and the second largest in the state of New York. As an integrated group practice, we are able to offer our patients efficient specialty care, including in-house services such as medical imaging, laboratory, and pathology. In addition, we offer expertise in advanced prostate cancer care and maintain a research department that is nationally recognized for its clinical trials. A.M.P.'s success has resulted from the following:

Growth: The growth of A.M.P. has improved access and provides continuity of care for a vast population of patients in nine clinical offices over a large geographical area in Central New York.

Specialization: The physicians of A.M.P. have a wide range of sub-specialty training, clinical interests, and certifications, which give our patients the state-of-the-art expertise they need for the most complex conditions.

Professionals: A.M.P.'s team of physicians, providers, clinical, clerical, and support staff are unrivaled in their excellence and in their consistent and compassionate approach to delivering care.

Our success has led to more than a decade of service, marking a pivotal point in our history with further changes and future growth on the horizon.

Our expertise and state-of-the-art technology have allowed A.M.P. to be a quality resource to the Central New York community. As we look ahead, amid progress, new treatments, and research, we will continue to provide the best care for our patients, develop new opportunities for employees, and foster relationships in our communities.

Thank you for celebrating with us.

Howard J. Williams, MD
Chairman/Chief Executive Officer



FAR-REACHING SERVICES MEET THE NEEDS OF A REGION

MISSION STATEMENT AND VALUES STATEMENT:

The mission of Associated Medical Professionals is to ensure that every patient contact results in a superior experience.

Our vision is to remain the region's premier urology/radiation oncology group practice through our commitment to our patients and in support of our staff. Our goal is to provide compassionate, quality care in an accessible and cost-effective fashion. This will allow future growth and sustainability of our practice, while providing security for our employees and physicians.

OUR CORE VALUES

Integrity Excellence Respect

Compassion Community

History and Values

As an independent, integrated physician group practice, Associated Medical Professionals (A.M.P.) is a success story in patient-centered, value-based care. In 2008, two urology practices merged to form A.M.P. Since then, A.M.P. has become one of the largest multi-specialty group practices of its kind in Central New York. In just 10 years, A.M.P. has become a leading urology group in the region—including nearly 30 urologists, three radiation oncologists, and 20 advanced practice providers, A.M.P. has developed offices in five counties and affiliations with nine hospitals. The integration of clinical services—in-house imaging, pathology, and a radiology facility—provides all patients equal access to efficient, high-level care.

On the Continuum of Care

The organization has successfully achieved its competitive edge by successfully integrating physician groups that had already established a strong presence in the region. Streamlining support functions, such as finance, operations, technology, and human resources ultimately serves both patients and physicians. For patients, it helps in the navigation of the health care system, from in-house lab work to A.M.P.'s network of specialists and surgeons. For physicians, it means strengthening the delivery of care. This consolidation of disciplines has created a network of diagnostic, therapeutic, and rehabilitative services. In other words, A.M.P. provides a home base for patients.

Invested in Central New York

A.M.P. celebrates more than a decade of service to Central New York—and the impact is wide-ranging. Not only has the practice invested in the region in ways that broaden its base, but it has distinguished itself around the country. A.M.P.'s nationally recognized research division conducts a robust program that fosters a culture of collaboration. Its physicians work in partnership to pursue advances in the field and to accelerate the process of taking novel treatment modalities out of the lab to the patient's bedside (*see page 11*). Radiation Oncology treated its first patient in January 2007. Resources expanded to include pathology and CT services (*see page 16*). By 2009, the practice offered ultrasound imaging, with additional on-site laboratories in other offices. To meet a need, A.M.P. has invested in women's health (*see page 13*). Looking ahead, in 2020, there is a plan for an outpatient ambulatory surgery center.





MILESTONES IN THE HISTORY OF A.M.P.

By integrating new technology—UroLift for enlarged prostate, RapidArc in radiation therapy, and advances in immunotherapy—A.M.P. has instituted groundbreaking treatment in medicine reaching a wider population. It is one of the first institutions in the world to administer Sipuleucel-T to treat patients with advanced prostate cancer. As A.M.P. moves ahead, it has expanded specialties to include women’s health in urology and the development of a new sub-specialty in women’s pelvic health (and robotic sacrocolpopexy surgery) by urologist Dr. Hadley Narins. A.M.P. is not only at the center of the community as a high-quality resource, but at the center of the most successful models in health care today.



2008	2009	2010	2011	2012	2013	2014	2015	2016	2017	2018	2019	2020-2021
Associated Medical Professionals was established by merging Syracuse Urology Associates, P.C., Associated Urologists of CNY, and Syracuse Radiation Oncology. Pathology and laboratory services expanded to the Water Street office.	A.M.P. merged with CNY Urology, P.C. A second radiation accelerator machine was added to Water Street, as well as administration and billing staff. Ultrasound imaging was added. Laboratory services were increased at other locations.	A.M.P. expanded its Syracuse office to add more than 17,000 square feet. A.M.P. was one of the first institutions in the world to administer Provenge (Sipuleucel-T) to treat patients with advanced prostate cancer.	A.M.P. merged with Urology Consultants of Syracuse, P.C., Urology Specialists of CNY, P.C. (Cortland, NY), and with Mohawk Valley Urology, P.C. (Utica, NY) and Urology Associates, P.C., the latter two merging to form New Hartford Division in New Hartford and Rome, NY. A.M.P. also launched its research division.	A.M.P. opened a second Radiation Oncology and CT office in New Hartford, NY.	William H. Foresman, MD, joined the practice when A.M.P. merged with Lake Region Urology, P.C. (Auburn, NY).	A.M.P. opened a new office in Fulton to provide urologic care in the northern region. Elizabeth W. Bozeman, MD, and Gary D. Bozeman, MD, joined the practice, bringing 23 years of expertise as partners in their own practice.	A.M.P. moved support staff to a separate corporate office. Researchers completed a clinical trial evaluating the SpaceOAR hydrogel spacer system now being widely used for patients undergoing prostate image guided intensity modulated radiation therapy (IG-IMRT).	A.M.P. established an MRI fusion prostate biopsy program.	Bashar Omarbasha, MD, was distinguished in the UroLift Center of Excellence, which recognizes urologists who reach an expert level of training in the procedure. A.M.P.’s research division participates in multiple landmark clinical trials for the development of advanced prostate cancer drugs.	Po N. Lam, MD, marks a record 1,500 robotic surgeries, more than any other surgeon in Central New York.	Hadley W. Narins, MD, joined A.M.P. and developed a new sub-specialty in women’s health to specifically address urinary incontinence and pelvic organ prolapse.	Planned outpatient ambulatory surgery center.

LEADING IN MODEL CARE

A.M.P. Today, a Decade Later

In the decade since it was established, combining several affiliate urology practices, A.M.P. has emerged as one of the largest multi-specialty groups in the region.

The core objective of merging with other medical groups is to better reach a population in need.

Integrated clinical services offer patients superior care in the treatment of conditions involving the bladder, kidneys, prostate, and urinary tract.

Strongly rooted in Syracuse and Onondaga County, ten offices now extend east to Madison and Oneida counties, west into Cayuga county, and north to Oswego. A.M.P. statistics illustrate its growth, development, and leading position in a competitive health-care environment.



More than
45
Providers

More than
300
Employees

The largest integrated urology/R.O. group practice in Central New York.

133,000

Patient visits annually

Patients across the region have access to exceptional care.

5,900*

Surgical procedures performed annually

The dominant market leader of urology in the region.

560

Oncology patients treated annually with advanced radiation techniques

State-of-the-art technology and equipment offers new hope for people with all types of cancer.

2,000

Prostate biopsies performed annually

The area's largest MRI-guided fusion biopsy program.

1,900

Kidney stone procedures annually

Includes outpatient lithotripsy procedures.

60

Ongoing clinical trials

Dedicated full-time research department.

10

Locations available to A.M.P. patients

Services include CT imaging, ultrasound, laboratory and chemistry, cytology, pathology, urodynamics, radiation therapy, and surgery.

* Includes approximately 450 robotic procedures using the da Vinci system.

LEADERSHIP

Associated Medical Professionals has a growing reputation as a premier center for urology care beyond the region. The organization has been building on state-of-the-art technology and equipment to offer new hope for people in the battle against cancer and all manner of urological conditions and diseases. Its CLIA-certified clinical laboratory ensures precision and quick access to results for physicians. A.M.P. supports an in-house radiologist to provide immediate interpretations and physician collaboration.

Board Members

David M. Albala, MD
 Gary D. Bozeman, MD
 Neil F. Mariados, MD
 Benjamin R. McHone, MD
 Christopher M. Pieczonka, MD
 Jeffrey J. Sekula, MD
 Daniel R. Welchons, MD



Howard J. Williams, MD
 Chairman of the Board
 of Managers and
 Chief Executive Officer

Howard J. Williams, MD, a board certified urologist, is a founding member and the group's CEO, since 2009. In addition to his medical affiliations, he is actively engaged in representing the organization locally and on a national level. After 30 years of practicing medicine, he is now dedicating his efforts to the development of opportunities designed to increase patient services. As A.M.P.'s physician leader, he plays a major role in creating a comprehensive vision to deliver compassionate care, while embracing a new health care paradigm.



Christopher R. Williamson
 Chief Operating Officer

Christopher R. Williamson helped establish A.M.P. as the largest multi-specialty group practice in the region, from its original founding in specialty practices of urology and radiation oncology in 2007. As the COO, he played a key role in the formation and expansion of A.M.P. through the integration of specialists in the region. Together, they offer a new era of integrated health care and partnerships to reach a wide-ranging population. He and his management team have overseen several years of substantial growth in which a number of well-established group practices, as well as newly recruited specialists, converged under A.M.P. He continues to make improvements within the organization and manage ongoing growth, while initiating further development opportunities for the practice.



Angelo R. DeRosalia, MD
 Incoming Chairman/Chief
 Executive Officer (March 2020)

A recipient of numerous awards and the author of several publications, Angelo R. DeRosalia has been a board certified urologist with A.M.P. since 2008. In the last 10 years, he has contributed to pioneering minimally invasive treatments that have placed A.M.P. at the forefront of innovation. As the practice moves forward into its second decade, he is dedicated to maintaining the high standard of health care, unrivaled clinical skill, and robust research that have made A.M.P. a premier center for urologic care. Under his direction, A.M.P. will continue exploring and advancing diagnostics and treatment to provide the best and most comprehensive care to patients across the region.



Accreditations and Certifications

Certifications and accreditations provide objective third-party evaluations that validate the quality and competency of health care organizations. A.M.P. has been granted the following:

The Joint Commission's Gold Seal of Approval. This signifies compliance with national standards for health care quality and safety in ambulatory care organizations from The Joint Commission, a non-profit organization that accredits and certifies hospitals, health care groups, and programs in the US. Fewer than half of ambulatory care organizations in the US have earned this accreditation.

Accreditation for Radiology Services by the American College of Radiology (ACR). This represents the highest level of quality and patient safety and is awarded only to facilities that meet rigorous practice guidelines and specific technical standards developed by ACR. The process considers staff qualifications, quality control, safety policies and image quality. Only 600 sites in the US have been accredited.



EXPERTS IN THE FIELD, EXCEPTIONAL CARE IN THE COMMUNITY

An Outstanding Medical Team

Our physicians, surgeons, technicians, and nurses offer a breadth of experience in patient care and in clinical research. In an effort to provide superior patient care, A.M.P.'s team of specialists uses state-of-the-art resources and the newest technology to offer the most comprehensive treatment plans to achieve the best possible outcomes.



“Without the support of our 300 employees, A.M.P. would not be able to provide the superior quality care to our patients or operate the business without each and every employees’ hard work and effort each day.”

—Chris Williamson, COO

Kidney Stones

Approximately one in seven adults will suffer from kidney stones at some point in their lives. Through non-invasive interventions, urologists can heat stones. Extracorporeal Shockwave Lithotripsy (ESWL) uses high-energy shock waves (precise sound wave) to break up the stones so a patient can pass them more easily. For other stones, a surgeon likely will use ureteroscopy, an outpatient procedure in which a laser is used to break up stones.

Kidney Cancer

Tumors of the kidney are easily detected through radiologic imaging—and some through incidental imaging. Treatment for kidney cancer typically includes removal of the kidney, which in the past, used open surgical techniques. Currently, laparoscopic or da Vinci robotic-assisted technology are commonly used to remove either a portion or the entire kidney. The widespread use of laparoscopic and robotic surgery translates into a more comfortable overall experience for the patient, including smaller incisions, less pain, and a shorter recovery period.

Urinary Incontinence (UI)

Historically, patients strictly relied on medication for temporary relief of incontinence. Today's advanced treatment options offer longer-term solutions. Urodynamics diagnostic testing and bladder scanning are painless, noninvasive methods that result in much-improved treatment. Urologists have at their disposal more leading-edge devices as well. A pessary, a semi-rigid ring, placed in the vagina repositions the urethra to reduce stress incontinence. A pubo-vaginal sling and bulking agents, like Macroplastique or collagen, support the urethra. Botox injections relax the muscle, as does InterStim therapy, which quiets the nerves that control the bladder. To treat overactive bladder, practitioners may recommend pelvic floor physical therapy, biofeedback (to retrain pelvic floor muscles), and Kegel exercises to strengthen muscle groups.

Interstitial Cystitis (IC)/ Bladder Pain Syndrome (BPS)

Interstitial cystitis (IC) is a chronic bladder condition causing discomfort and/or pain in the bladder or pelvic region. IC can cause scarring and stiffness in the bladder, which prevents the bladder from expanding normally. This condition can be treated successfully with oral medications, combined with dietary changes, physical therapy, bladder retraining, and surgery.

Bladder Cancer

Bladder cancer is commonly diagnosed by cystoscopy in which the bladder is viewed using a telescope. Various forms of imaging and urine studies are also used to determine the presence of abnormal cells. Treatment options include removing the bladder tumor through telescopes placed into the bladder, chemotherapy agents, surgery, and less conventional methods, such as laparoscopic procedures or da Vinci robotic-assisted techniques.

Prostate Cancer

There are multiple treatment options for prostate cancer, which include observation. Physicians draw on a number of treatments, when necessary: external beam radiation therapy, prostate surgery (traditional surgery), da Vinci robotic-assisted prostatectomy, cryosurgery, hormonal ablation, chemotherapy, or immuno-therapies and a host of newer oral medications.

Testicular Cancer

Nearly all men with testicular cancer undergo surgery to remove the testicle, which allows the physician to determine the type of cancer cells present and plan appropriate post-surgery treatment. Physicians often recommend surveillance, if the cancer is caught at an early stage. If there is evidence the cancer has spread, patients may require chemotherapy, radiation therapy, and additional surgery to remove lymph nodes.

Female Pelvic Medicine

Urology has been traditionally male-dominated, focused on men's health, oncology, and fertility. Women deal with conditions that require a urologist, conditions like incontinence, overactive bladder, interstitial cystitis, and recurring urinary tract infections. Women may prefer to be treated by another woman. A.M.P. has two physicians specially certified in Female Pelvic Medicine & Reconstructive Surgery by the American Board of Urology. This specialization includes treatment modalities that cover a range of patient needs:

- Pharmaceutical or natural remedies
- Physical therapy and pain management
- Surgical options



Men's Sexual Health

When addressing the issue of men's sexual health, A.M.P. focuses on providing patients with a high degree of privacy and comfort. Its nationally recognized in-house experts have helped thousands of patients. When dealing with erectile dysfunction, alternatives for treatments include oral and injectable medications, vacuum erection devices, urethral pellets, and penile prosthesis. Vasectomies can be performed safely and effectively on an outpatient basis.

Male Infertility

A.M.P. offers a host of services to evaluate and treat male infertility. Evaluations include hormone panel assessment, physical examination, detailed imaging services, and a holistic review of potential causes of male infertility. Vasectomy reversals can be done in the surgery center as a one-day procedure using a state-of-the-art Zeiss operating microscope. A.M.P. also partners with local women's fertility centers to enhance the success of couples seeking to start a family.

Benign Prostatic Hyperplasia (BPH)

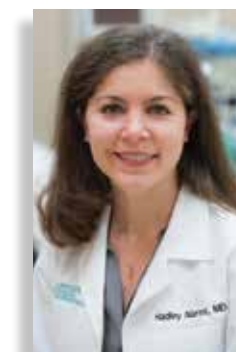
BPH is common as men age. Advanced testing with urodynamics assesses bladder function and possible obstruction. Treatment options can include medical therapy (5-alpha-reductase inhibitors and alpha-blockers) and other minimally invasive procedures. UroLift or Rezum procedures are the latest treatment options. Traditional treatment includes transurethral resection of the prostate and laser vaporization techniques.

A.M.P. Strives to Meet a Need in Women's Health Care

Among specialties, urology has the largest gender disparity, with a dramatic ratio of men to women hovering at about 92%. It has been an unmet need for female patients, who may prefer to see a female practitioner. Consulting with an experienced female urologist may make all the difference. A.M.P. is working to improve women's urological health by forging new partnerships and advancing research and development.



Elizabeth Wagner Bozeman, MD, is a board certified female urologist on staff. In this male-dominated specialty, she paved the way for women in her own state. She became the first woman to complete the urology program at the Medical University of South Carolina (MUSC) and the first woman to practice urology in the state of South Carolina. In practice since 1995, she specializes in female urology, incontinence, recurrent urinary infections, stone disease, interstitial cystitis, and other conditions of general and female urology. She is a past president of the South Carolina Urological Association and the Society of Women in Urology.



Hadley Narins, MD, took an unconventional path to medicine, with a degree in English literature from Yale University. She went on to earn a medical degree from Thomas Jefferson University in Philadelphia and a fellowship in Female Urology and Pelvic Reconstruction at Minnesota Urology. She has brought minimally invasive approaches to pelvic organ prolapse, including robotic sacrocolpopexy to Crouse Hospital. Narins has established a robust surgical team, but harnesses a full range of options, including pelvic floor physical therapy, to target pain and incontinence.

USING THE POWER OF TECHNOLOGY TO OPTIMIZE PATIENT CARE



Artemis 3D semi-robotic fusion biopsy prostate system

Innovation and Technology

A.M.P. invests significantly in technology and regularly assesses its competitive edge in making advances in diagnostics and robotic surgery, which enable physicians to more precisely take aim at disease. The procedures and tools urologists employ not only optimize treatment but transform lives. For instance, the da Vinci System is an expandable technology platform that seamlessly integrates a range of current technologies and can accommodate future innovations in areas of imaging, advanced instruments, and anatomical access. Procedures include multi-quadrant urological surgery, with the potential to incorporate surgeries in gynecology, thoracic, cardiac, and general surgery.

Hospital Affiliations

Auburn Community Hospital
Community Memorial Hospital
Crouse Hospital
Faxton St. Lukes Hospital
Oneida Healthcare Center
Oswego Hospital
Rome Memorial Hospital
St. Elizabeth Medical Center
St. Joseph's Hospital Health Center
Upstate University Hospital Community Campus

Clinical Research Division

A.M.P.'s research division has become a recognized body in the community for its rigorous trials and findings. On staff are fellowship-trained urologists with distinguished individual research careers as principal investigators in multiple studies spanning 20 years. Most of our clinical trials are conducted out of two clinical sites, which cover all geographic locations of our practice. Each site is prepared and equipped with dedicated research space, personnel, and equipment.

Immunotherapy

Director of A.M.P. Clinical trials Dr. Christopher Pieczonka is a pioneer in immunotherapy (Sipuleucel-T) and one of the first urologists in the world to offer this alternative to his patients. Sipuleucel-T is a cell-based prostate cancer vaccine composed of the patient's own immune cells, which have been stimulated to target prostatic acid phosphatase protein. In cases where there are limited treatment options—where the cancer is resistant to hormones—the therapy has proven effective. Dr. Pieczonka is also the first urologist in Upstate New York to administer checkpoint inhibitors for bladder cancer.

The UroLift System

This procedure deploys an implant to open the urethra. A.M.P. has become a leader in this revolutionary, minimally invasive approach to the treatment of an enlarged prostate or BPH. There is no cutting, heating, or removal of prostate tissue.

The da Vinci System

This surgeon-controlled robotic platform is designed for complex but minimally invasive urologic surgeries. These include prostatectomies in which the target site is tightly confined and surrounded by nerves affecting urinary control and erectile function. Surgeons using a robotic system have an exacting tool for avoiding damage to surrounding nerves. A.M.P. has consistently expanded its use for urologic cancers, reconstructive surgery, and kidney stones.

RapidArc

As a mechanism for radiation therapy, RapidArc is a seamless, more refined treatment unrivaled in sophistication. Leading-edge image-guided technologies converge to enhance delivery and precision of radiation. It combines: Intensity Modulated Radiation Therapy (IMRT), Image Guided Radiation Therapy (IGRT), On Board Imaging (OBI), and Cone Beam CT Scanning (CBCT). RapidArc targets and transmits radiation, potentially within 90 seconds per fraction.

Prostate Fusion Biopsy

MRI/ultrasound fusion guided biopsy combines MRI scan with an ultrasound image to help A.M.P. urologists precisely target the area of the prostate that needs to be biopsied.



da Vinci Robot

Laser Photo-Vaporization of the Prostate (PVP)

This new laser treatment combines the effectiveness of a standard—and more invasive—surgical procedure with the safety and accuracy of a minimally invasive procedure. PVP removes excess prostate tissue using a high-power green light laser, which vaporizes and removes the enlarged prostate tissue instantly. With PVP, even patients on blood thinner therapy can be successfully treated. PVP eradicates tissue so urinary symptoms are rapidly relieved, accompanied by a dramatic improvement in natural urine flow.

Outpatient Surgery, On-site Diagnostics, and Oncology Unit

Our state-of-the-art, Clinical Laboratory Improvements Amendments (CLIA) certified clinical laboratory ensures that our patients have the highest quality diagnostic testing. Screening for prostate cancer using serum PSA (total and free), the evaluation of male infertility and sexual dysfunction by testing testosterone levels, and testing for both acute and chronic urinary tract infections, are all done on-site. This service ensures that our patients have the quickest turnaround time because they don't have to wait for results to be relayed from an outside laboratory.

Pathology

All prostate biopsies and bladder biopsies that are performed in our office are processed in our Clinical Laboratory Improvements Amendments (CLIA) certified laboratory and analyzed by our board certified pathologists. Our experienced pathologists are trained to examine and diagnose cancer at every stage. They work closely with our urologists so that our patients are confident that they are receiving the best possible treatment for management of their disease.

Cytology

Urine cytology testing looks for abnormal cells in the urine that could be seen in conditions such as bladder cancer, or other cancers of the urinary tract system. Our American Society of Clinical Pathology (ASCP) certified cytotechnologist microscopically screens all cytology specimens to identify the abnormal cells. They are then reviewed and diagnosed by our pathologists, providing our patients and urologists with optimal quality assurance for the best possible care. A.M.P.'s laboratory is accredited by The Joint Commission.

Division of Radiation and Oncology

A.M.P looks to groundbreaking, life-saving cancer clinical trials to create the most comprehensive treatments available today. Made up of board certified physicians, dosimetrists, radiation therapists, nurses, and technicians, patients can count on a team with expertise in a range of cancers, not just prostate and urological cancers but lung, breast, brain, bone, colorectal, esophageal, GYN, skin, head and neck, and pancreatic cancers.



CULTIVATING A WORKPLACE THAT INVESTS IN THE COMMUNITY

Giving Back

Commitment to the community is a fundamental principle at A.M.P. Employees invest time and resources not only to improve the lives of patients but to enrich the community.

This connection reinforces its position as the region's premier urology/radiation oncology group—and A.M.P.'s goal of providing patients with access to compassionate, high-quality care.



Race to End Prostate Cancer

Since 2014, A.M.P. has been affiliated with the nationwide organization, ZERO – The End of Prostate Cancer and has hosted five annual ZERO Run/Walk events. As A.M.P.'s highest-profile charity event, the race attracts nearly 2,000 participants each June. These funds go to two ZERO programs that benefit prostate cancer patients throughout Central New York.

In the last five years, A.M.P. has raised more than \$415,000, which support two new vital community programs: ZERO360 Comprehensive Patient Support covers insurance navigation, cancer screening services, financial aid, and patient support and the ZERO Drive program offers transportation services to prostate cancer patients.



New York State Statistics

131.7 in every 100,000 men diagnosed
In 2019, there will be 9,700 new cases

National Rankings by State:

#6 for prostate cancer incidence
#38 for prostate cancer deaths

ZERO's Impact in New York State:

Provided copay assistance to advanced prostate cancer patients.
More than \$8.2 million total provided to New York State prostate patients.

A Successful Operation

Last fall, A.M.P. physician Dr. Angelo DeRosalia, in partnership with Blanca's House, a New York-based nonprofit that provides medical care to communities throughout Latin America, traveled to Guayaquil, Ecuador. Accompanied by two physician assistants and five support staff—equipped with medical apparatus and antibiotics—the team set out to evaluate the medical needs of patients in remote areas, like Santa Lucia, where a significant portion of the population does not have access to health care. With the assistance of two local Ecuadorian medical students, over the course of three days, the team evaluated 115 patients, providing crucial support.

Contributions to Local Organizations

Physicians have donated to many local charities and to community partnerships, including:

The Humane Association of Central New York

Susan G. Komen Foundation

Hillside Family of Agencies

Food Bank of Central New York

American Heart Association

Muscular Dystrophy Association

Sarah House

Jim and Juli Boheim Foundation



ACROSS CENTRAL NEW YORK

Urologists

David M. Albala, MD
Ilija Aleksic, MD
Kenneth Beasley, MD
Jonathan D. Block, MD
Elizabeth W. Bozeman, MD
Gary D. Bozeman, MD
Brent E. Carlyle, MD
Angelo R. DeRosalia, MD
William H. Foresman, MD
Ronald I. Kaye, MD
Richard M. Kronhaus, MD
Po N. Lam, MD
Andres M. Madisoo, MD*
Benjamin R. McHone, MD

Wael F. Muakkassa, MD
Hadley W. Narins, MD
Bashar Omarbasha, MD
Sasha Pavlov-Shapiro, MD
Christopher M. Pieczonka, MD*
Nedim Ruhotina, MD
David S. Schnapp, MD
Elan W. Salzhauer, MD
Harvey A. Sauer, MD
Jeffrey J. Sekula, MD
Richard I. Silver, MD
Arnold P. Teo, MD
Daniel R. Welchons, MD
Howard J. Williams, MD*

* *Founding members of A.M.P.*

Radiation Oncologists

Neil F. Mariados, MD*
Medical Director of Radiation Oncology
Stephen H. Randall, MD
Brij Sood, MD

Research Directors

Neil F. Mariados, MD
Director of Research
Christopher M. Pieczonka, MD
Director of Clinical Research

Advanced Practice Providers

Gaetane L. Bellamy, N.P.-C. Nurse Practitioner	Sarah K. Leo, F.N.P.-C. Nurse Practitioner	Melissa L. Rogers, F.N.P.-B.C. Nurse Practitioner
Sarah N. Cote, F.N.P.-C. Nurse Practitioner	Susan B. Lipsy, A.N.P.-B.C., C.U.N.P Nurse Practitioner	Morgan B. Rowe, N.P.-C. Nurse Practitioner
Theresa M. Hutchings, F.N.P., R.N.F.A. Nurse Practitioner	Hannah S. LoVallo, P.A.-C. Physician Assistant	Erin F. Sanderson, P.A.-C. Physician Assistant
Jeffrey S. Jones, P.A.-C. Physician Assistant	Theresa A. Moore, A.N.P. -B.C. Nurse Practitioner	Katie M. Simpson, P.A. -C. Physician Assistant
Cynthia A. Koval, P.A.-C. Physician Assistant	Barrie J. Pilgrim, D.C., P.A.-C. Physician Assistant	Luann M. Thayer, F.N.P.-C. Nurse Practitioner
Colleen M. Krug, P.A.-C Physician Assistant	Jennifer M. Rogers, N.P.-C. Nurse Practitioner	Sarah A. Waskiewicz, N.C.C.P.A. Physician Assistant
Anne M. Kukulski, P.A.-C. Physician Assistant		



A.M.P. UROLOGY

SYRACUSE
1226 E. Water St. 13210

LIVERPOOL
5100 W. Taft Rd. 13088

FAYETTEVILLE
4211 Medical Center Dr. 13066

FULTON
806 W. Broadway 13069

AUBURN
192 Genesee Street 13021

NEW HARTFORD
2 Ellinwood Drive 13413

ONEIDA
357 Genesee Street 13421

CAMILLUS
5700 W. Genesee Street 13031

ROME
Rome Medical Practice
Griffiss Business & Technology Park
267 Avery Lane 13441

HAMILTON
150 Broad Street 13346

CORPORATE OFFICE
LIVERPOOL
100 Metropolitan Park Drive 13088

A.M.P. RADIATION ONCOLOGY

SYRACUSE
1226 E. Water Street 13210

NEW HARTFORD
2 Ellinwood Drive 13413



CORPORATE OFFICE
100 Metropolitan Park Drive
Liverpool, New York 13088